

EUROPEAN STYLE

Edited by Hu Yanli Chen Zhouying

SHANGLIN



Synn Architekten | House Elise Vienna, Austria

The wish of the client, to give the young son a private, independent area, becomes the main topic of the design and organizes the arrangement of the rooms in the house. The three diversely proportioned structures are adapted in size and height to the different uses and accommodate the living areas, connected by a low "spine", in which the side rooms and the kitchen as well as the stairs are located.

The roofs of the structures are unequally pitched and also slope in different directions. Each structure offers room for one distinct area of life. The structure, which opens generously to the garden, harbours the living area with the connected kitchen and is the meeting point of the family. The children's room is located in the structure closed to the street which opens to a small courtyard. The raised structure allows to let the master's bedroom and the guest bedroom to float above the garden. The car as well as the building equipment are located below.

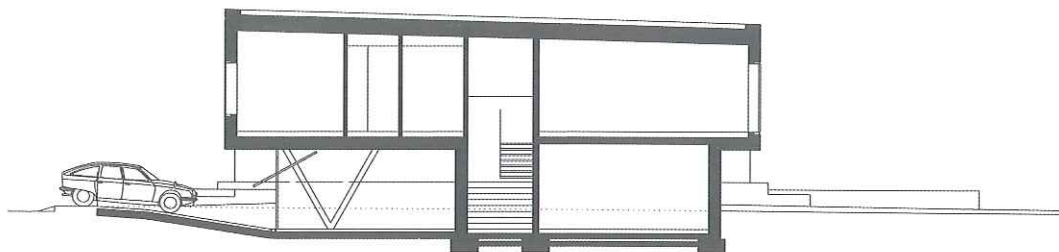
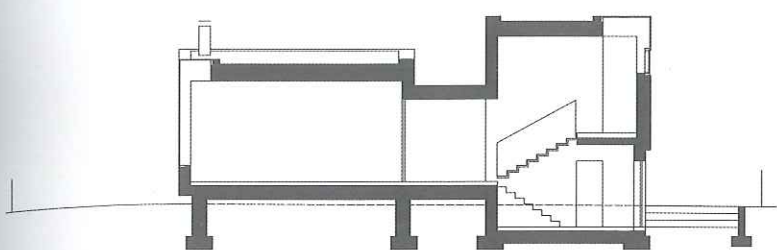
All structures (with the exception of the equipment room and the spine, which are visually firmly connected to the earth) are raised from the adjacent level and thereby establish a clear boundary to the garden, because the house shall remain urban, surrounded by a garden as a lower lying area, which wants to be entered intentionally.

By this arrangement, the building integrates into the surrounding divided building development, established by suburban turn of the century villas and small apartment buildings of a more recent date. The living areas are all oriented to the garden, they are closed to the street by not having any windows there. Only the study above the garage is oriented to the street. In contrast to the surrounding buildings a restraint towards the public space, which is consistent with the wish of the clients to achieve privacy.

All the windows in the cubes are guided over the corners and thereby compose generous and, most notably for the vertical glazing, interesting optical extensions of the rooms. From a lounge corner in the living room and from the master's bedroom, one can see directly to the stars. The spine is completely glazed on the narrow side and directs the view in the direction of the movement axis to the garden.

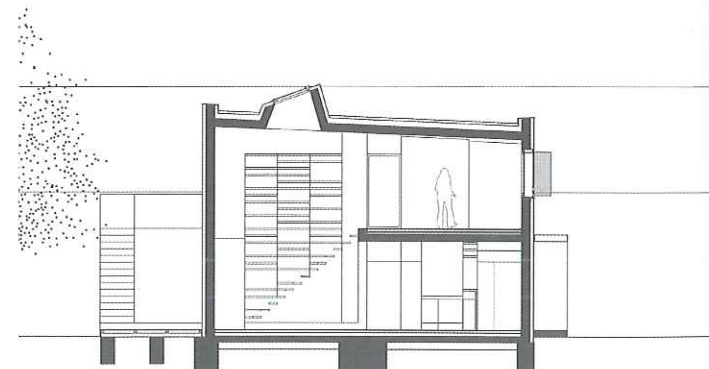
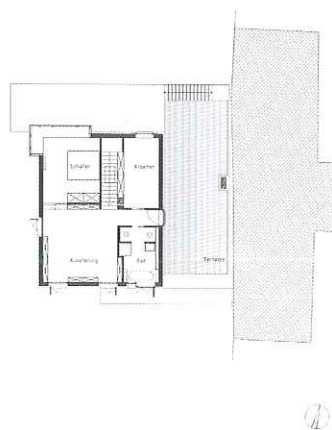
The varying surface design of the flooring in the interior and of the façade supports the design idea. The fettled cubes clearly stand out from the base covered with anodized aluminium plates and the spine.

Photographs: Manfred Seidl









Synn Architekten | [KO]mic

Gainfarn, Bad Vöslau, Austria

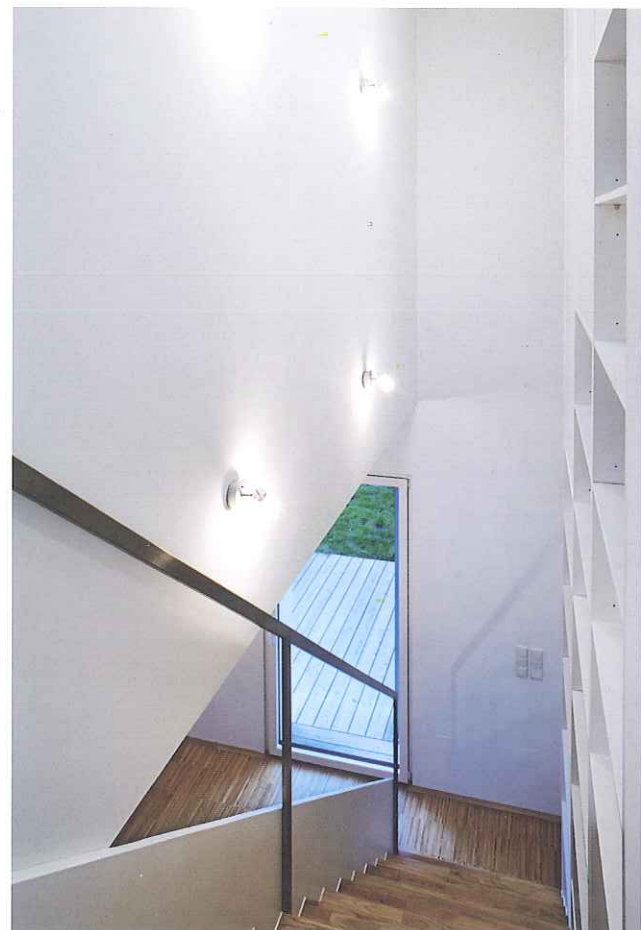
This simple summerhouse built for a collector is situated amongst numerous old trees on a property near Vienna. Offering a lot of storage space and areas for presentation of paintings, books and comics, this distorted cube acts as a small museum.

The irregular placement of the windows transports the idea of a showcase, framing certain

views into the garden. They are located at the end of pathways or visual axes.

By raising the height of the living room oriented to the garden, consequently, the fully glazed bay situated directly above deforms the cube.

Photographs: Manfred Seidl





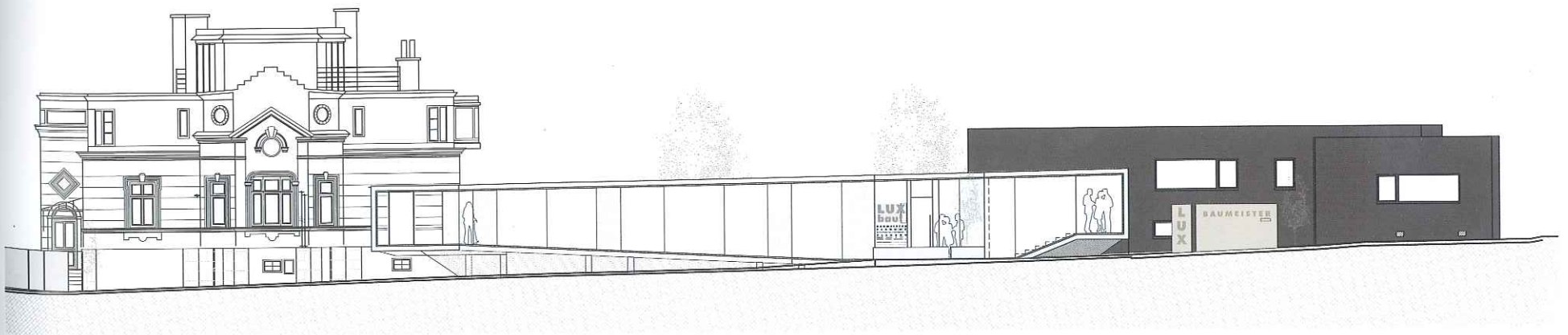
Synn Architekten | Luxbau Company Office Conversion

Hainfeld, Austria

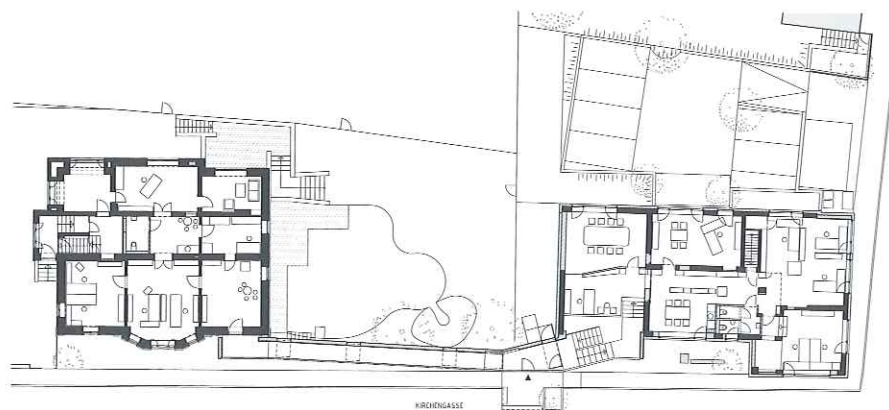
With the new passage, two previous separately used buildings become accessible through one entrance and two office areas of the construction company Lux get connected. The Wilhelminian Style Villa as well as the building from the early 1930s keep their special characteristics. Also, the energetic improvement of the buildings and their adaption in the interior take into consideration the particularities of the buildings and exemplify the handling with existing structures also to future clients of the construction company.

The extended building signs the company's philosophy for solidarity with construction and the attention to details, material and conceptual outstanding solutions. The new city scaping elements fall harmoniously into place with the small-town surrounding property and stimulate public use.

Photographs: Hertha Hurnaus









Synn Architekten

Young Housing at the Nordbahnhof *Nordbahnhof, Austria*

Housing for young people must meet three conditions: It must be affordable, should respond flexibly to changing situations and offer generous interior and exterior spaces for communication. Our project features small and economic units – “mini-lofts” – with a flexible floor plan (one or two room flats) – the fixed sanitary box manages the spatial separation. With its compact housing units on one side, on the other side the supply of differentiated but flexible open spaces is a

central task. These are the common areas in the floors – we call them the “floating gardens” – and other open spaces in the area of the ground floor and around the building, the sunken garden as the connecting theme of the neighborhood. The building itself is lifted above the service facilities on the ground floor to generate a covered open space.

Photographs: Manfred Seidl



